

Swivel castor SMM 150 PEK

Extra Heavy Duty Series SMM - Wheel PE

-40 °C - +80 °C

+++
swivels easily

+++
wear resistant

+++
shock proof

++
floor protective

+++
weather proof

Wheel



Casted high quality nylon wheel

Fork



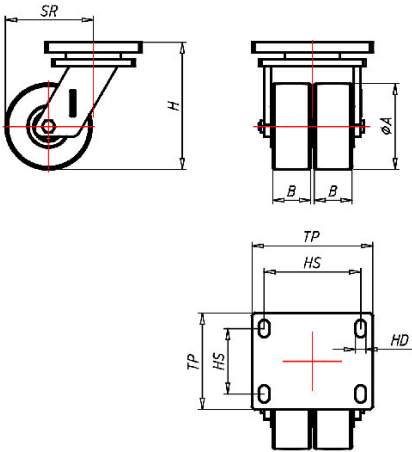
Solid steel welded construction, with axial grooved ball bearing DIN 711 and tapered roller bearing DIN 720, very strong integrated Kingpin, with grease nipple, sealed with 2 o-rings finish: alu-grey painted on request: zinc-plated and passivated (chrom VI-free)

Swivel castor	Wheel-Ø A x width B mm: 150x40+40
Load Capacity kg:	2000
Load capacity tested according to EN 12530 and EN 12527	
Overall height H mm:	215
Dimension of top plate TP mm:	140x110
Hole spacing HS mm:	105x75
Hole-Ø HD mm:	13
Swivel radius SR mm:	146
Wheel bearing:	Ball bearing

Advantages

- ✓ for extra heavy loads
- ✓ easy running on smooth floors
- ✓ impact proof
- ✓ high abrasion resistance
- ✓ easy to clean
- ✓ high chemical resistance

©Copyright 2024 Rollenbau GmbH, www.rollenbau.at 20.05.2024



Applications

- Metal-Technology
- Heavy duty dollies
- Trash container trucks
- Machinery moving dollies
- Workshops
- Racks
- Building-Industry